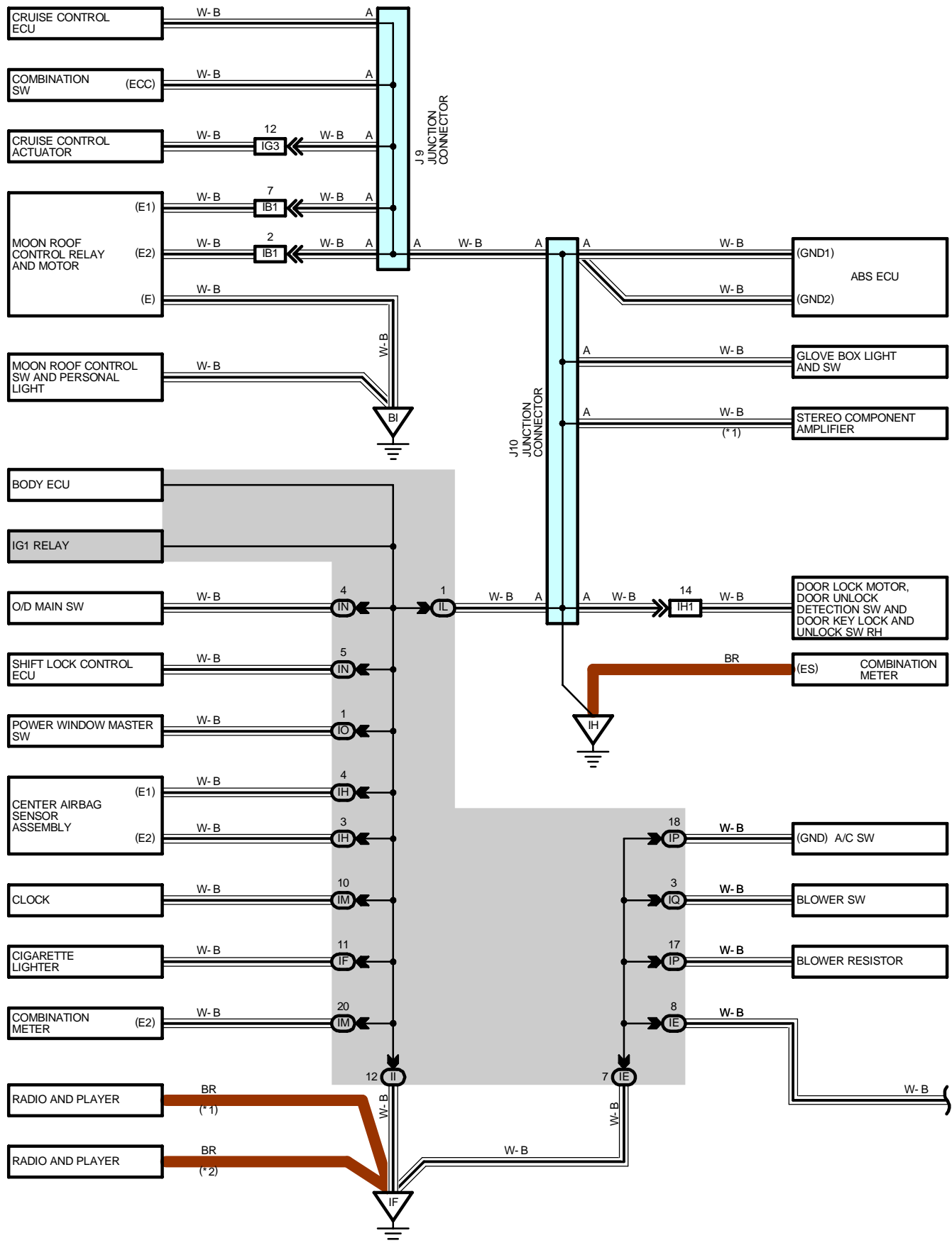
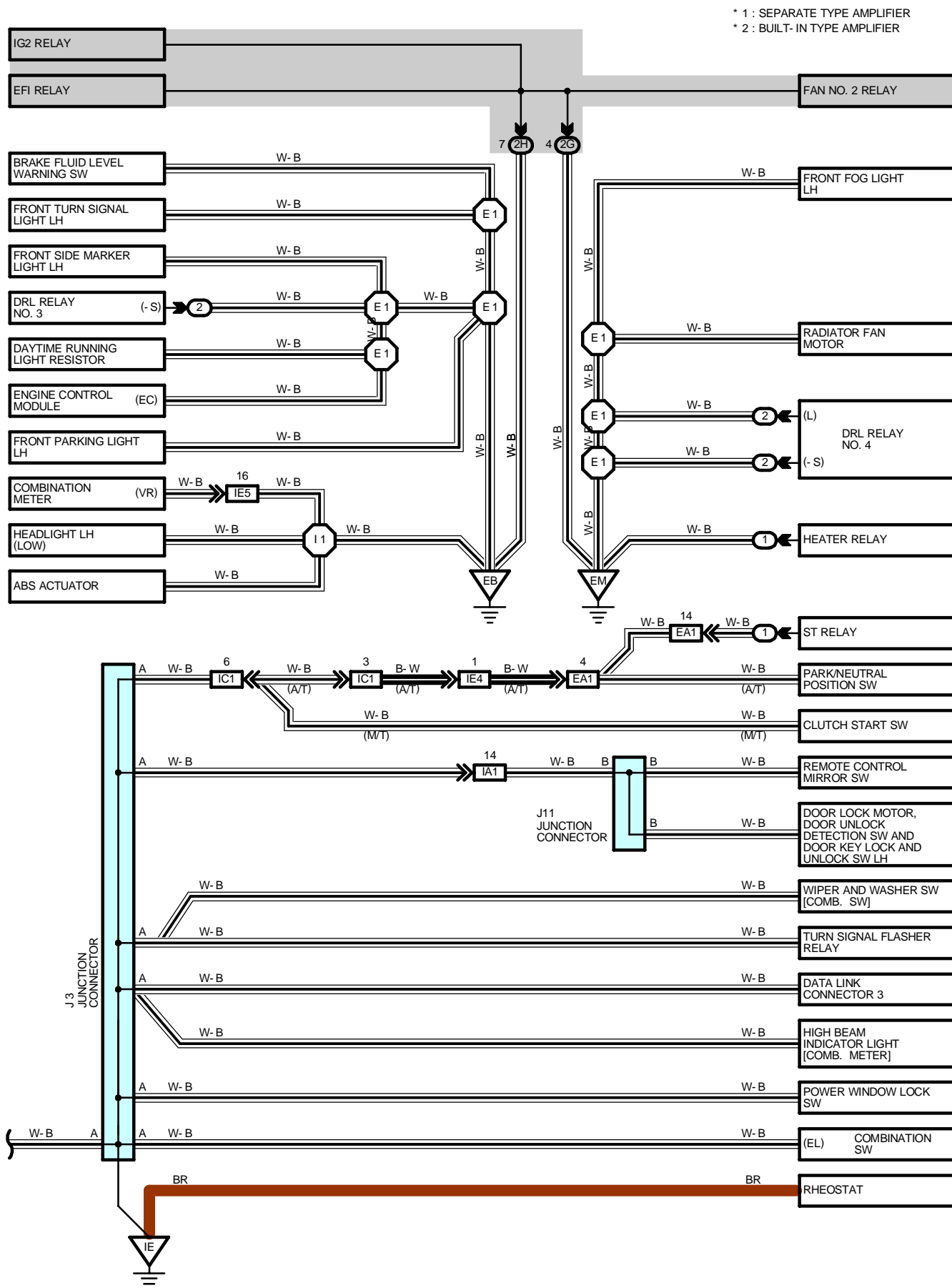
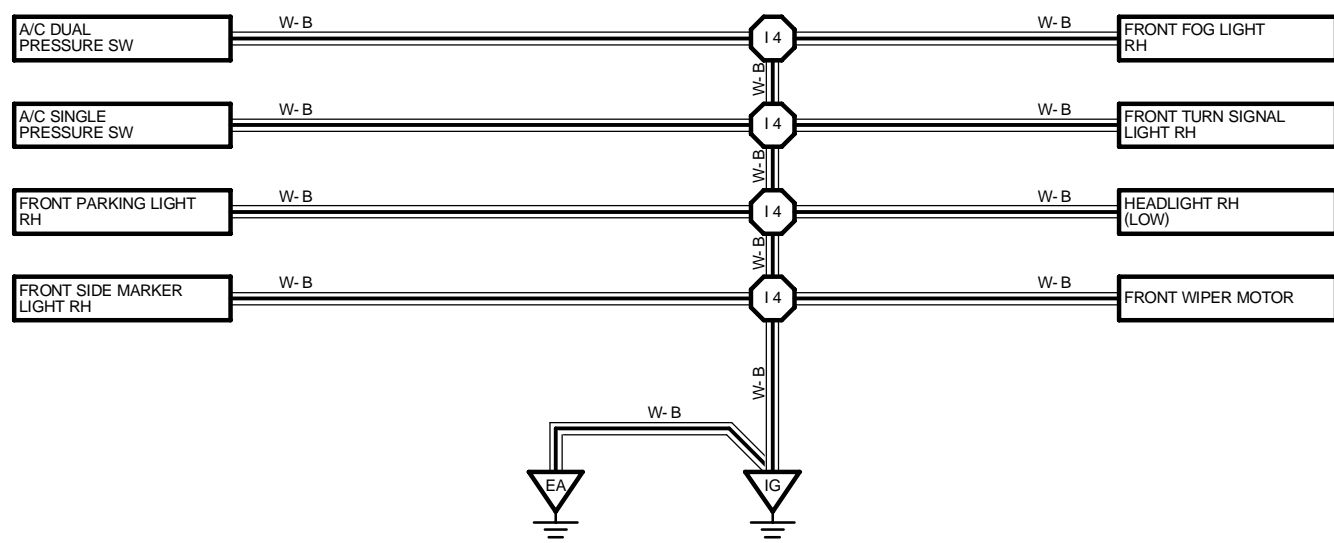
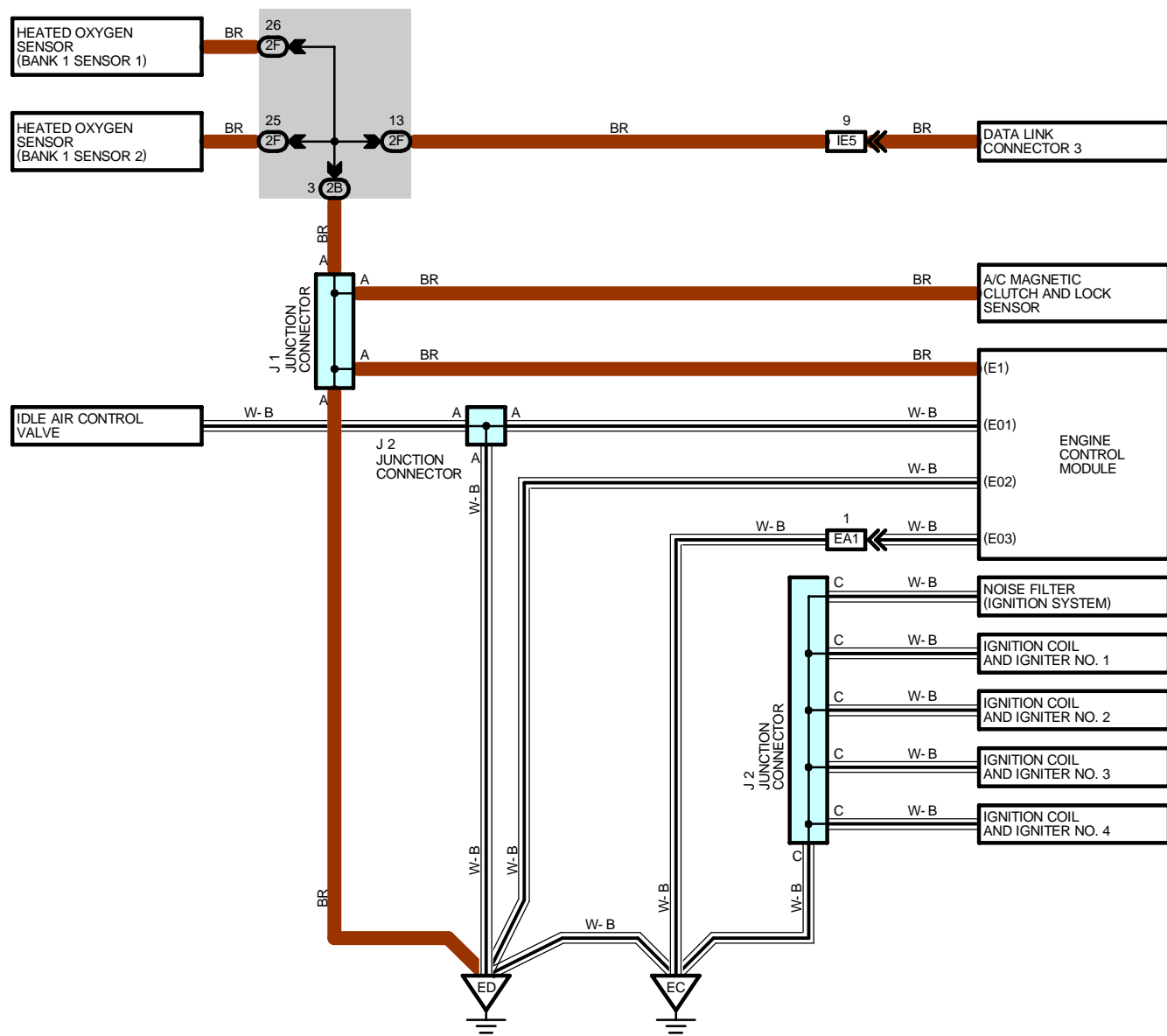


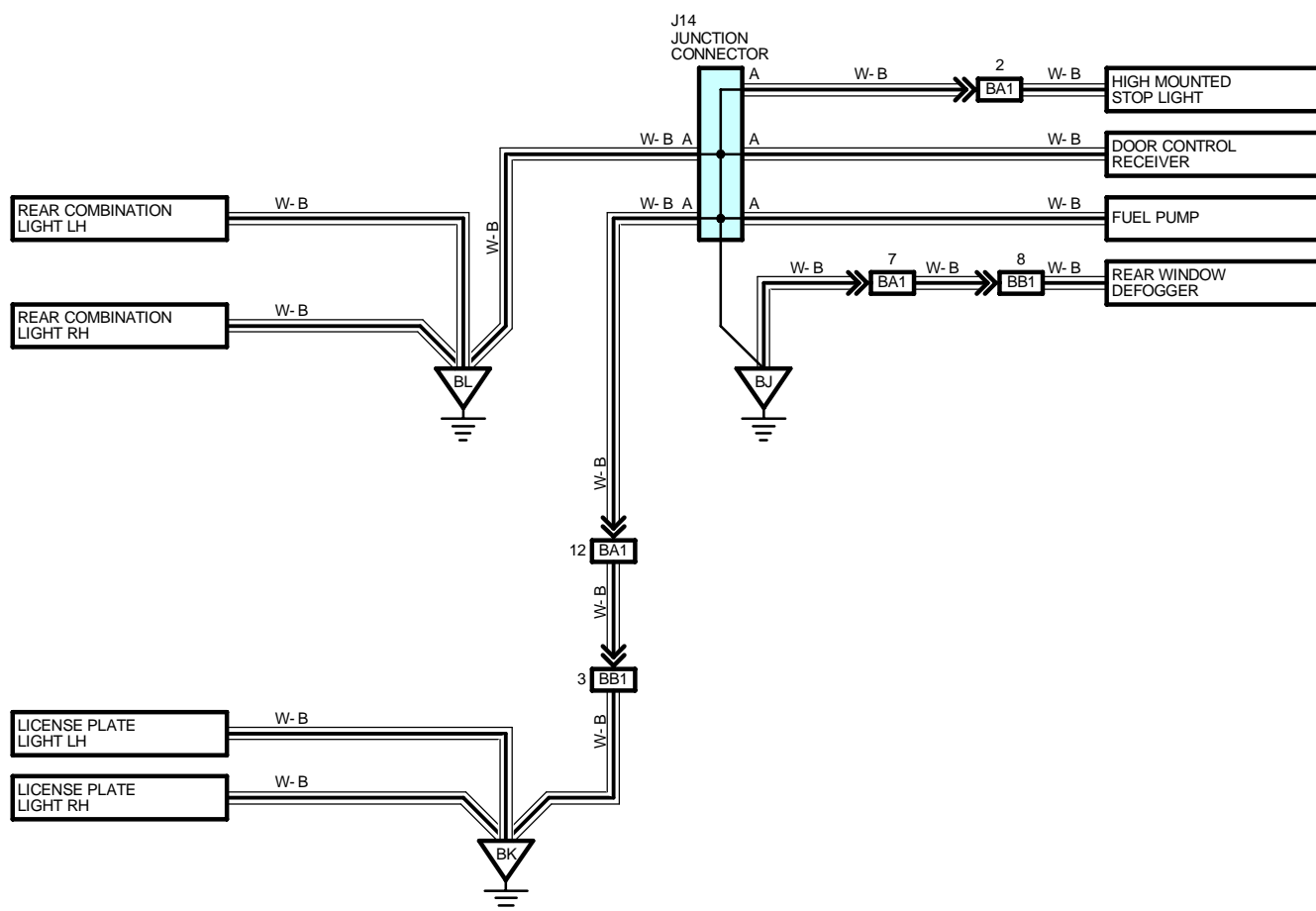
I GROUND POINT





I GROUND POINT





I GROUND POINT

: PARTS LOCATION

Code	See Page	Code	See Page	Code	See Page
J1	33 (1ZZ-FE)	J2	35 (2ZZ-GE)	J10	37
	35 (2ZZ-GE)	J3	37	J11	38
J2	33 (1ZZ-FE)	J9	37	J14	38

: RELAY BLOCKS

Code	See Page	Relay Blocks (Relay Block Location)
1	26	Engine Room R/B No.1 (Engine Compartment Left)
2	27	Engine Room R/B No.2 (Engine Compartment Left)

: JUNCTION BLOCK AND WIRE HARNESS CONNECTOR

Code	See Page	Junction Block and Wire Harness (Connector Location)
IE	25	Instrument Panel Wire and Instrument Panel J/B (Instrument Panel Brace RH)
IF		
IH		
II		
IL		
IM		
IN	25	Floor Wire and Instrument Panel J/B (Instrument Panel Brace RH)
IO		
IP	25	Cowl No.2 Wire and Instrument Panel J/B (Instrument Panel Brace RH)
IQ		
2B	23	Engine Wire and Engine Room J/B (Engine Compartment Left)
2F	23	Engine Room Main Wire and Engine Room J/B (Engine Compartment Left)
2G		
2H		

: CONNECTOR JOINING WIRE HARNESS AND WIRE HARNESS

Code	See Page	Joining Wire Harness and Wire Harness (Connector Location)
EA1	40 (1ZZ-FE)	Engine Wire and Engine Room Main Wire (Inside of Engine Room R/B No.1)
	42 (2ZZ-GE)	
IA1	44	Front Door LH Wire and Instrument Panel Wire (Left Kick Panel)
IB1	44	Roof Wire and Instrument Panel Wire (left Kick Panel)
IC1	44	Instrument Panel Wire and Instrument Panel No.2 Wire (Instrument Panel Reinforcement LH)
IE4	44	Engine Room Main Wire and Instrument Panel Wire (Instrument Panel Brace LH)
IE5		
IG3	46	Engine Room No.2 Wire and Instrument Panel Wire (Right Kick Panel)
IH1	46	Front Door RH Wire and Instrument Panel Wire (Right Kick Panel)
BA1	48	Back Door No.1 Wire and Floor Wire (Quarter Panel LH)
BB1	48	Back Door No.2 Wire and Back Door No.1 Wire (Back Door Upper Left)

**: GROUND POINTS**

Code	See Page	Ground Points Location
EA	40 (1ZZ-FE)	Front Right Fender
	42 (2ZZ-GE)	
EB	40 (1ZZ-FE)	Front Left Fender
	42 (2ZZ-GE)	
EC	40 (1ZZ-FE)	Cylinder Head Cover LH
	42 (2ZZ-GE)	
ED	40 (1ZZ-FE)	
	42 (2ZZ-GE)	
EM	40 (1ZZ-FE)	Front Left Fender
	42 (2ZZ-GE)	
IE	44	Cowl Side Panel LH
IF	44	Instrument Panel Brace RH
IG	44	Cowl Side Panel RH
IH		
BI	48	Roof Left
BJ	48	Luggage Room Left
BK	48	Back Door Left
BL	48	Back Panel Center

**: SPLICE POINTS**

Code	See Page	Wire Harness with Splice Points	Code	See Page	Wire Harness with Splice Points
E1	40 (1ZZ-FE)	Engine Room Main Wire	I1	46	Engine Room Main Wire
	42 (2ZZ-GE)		I4	46	Engine Room No.2 Wire